

S

SERIES




SELECTION

Series line-up consists of three types of indoor units.
Choose the model that best matches room conditions.

SELECT INDOOR UNIT

Select the optimal unit and capacity required to match room construction and air conditioning requirements.

R32
R410A




Units without Remote Controller
SLZ-M15FA3
(Multi split series connection only)
SLZ-M25FA3
SLZ-M35FA3
SLZ-M50FA3
SLZ-M60FA3

Panel


Panel	With Signal Receiver	With 3D i-see Sensor	With Wireless Remote Controller	With Plasma Quad Connect
SLP-2FA				
SLP-2FAL	✓			
SLP-2FAE		✓		
SLP-2FALE	✓	✓		
SLP-2FALM3	✓		✓	
SLP-2FALME3	✓	✓	✓	
SLP-2FAP				✓
SLP-2FALP	✓			✓
SLP-2FALMP3	✓		✓	✓

R32
R410A



Units without Remote Controller
SEZ-M25DA3
SEZ-M35DA3
SEZ-M50DA3
SEZ-M60DA3
SEZ-M71DA3

R32



Units without Remote Controller
SFZ-M25VA2
SFZ-M35VA2
SFZ-M50VA2
SFZ-M60VA2
SFZ-M71VA2

SELECT OUTDOOR UNIT

There is one outdoor unit for respective indoor units.

R32



SUZ-M25/35VA2

R32



SUZ-M50VA2

R32



SUZ-M60/71VA2

* To confirm compatibility with the MXZ Series multi-type system, refer to the MXZ Series page.

SLZ SERIES

R32
R410A

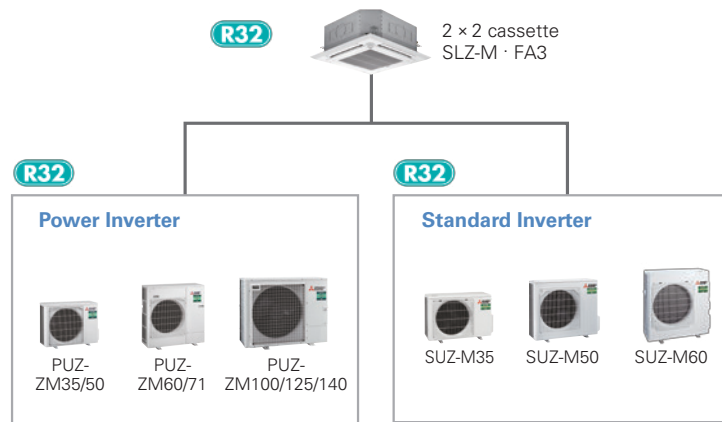
SLZ-M15/25/35/50/60FA3



Compact, lightweight ceiling cassette units with 4-way air outlets provide maximum comfort by evenly distributing airflow throughout the entire room.

2x2 Cassette Line-up

The SLZ series was previously only able to be connected to standard inverters and some power inverters. However, it can now also be connected to low-capacity power inverters. The ability to connect to a high-performance power inverter allows us to offer a wider range of options to our customers.



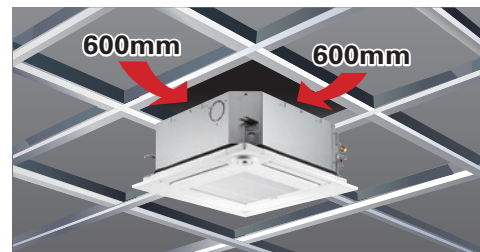
New Lineup

1.5kW has been introduced for multi connection. The diverse selection enables the best solution for both customer and location.

Capacity	15	25	35	50	60
SLZ-M	✓	✓	✓	✓	✓

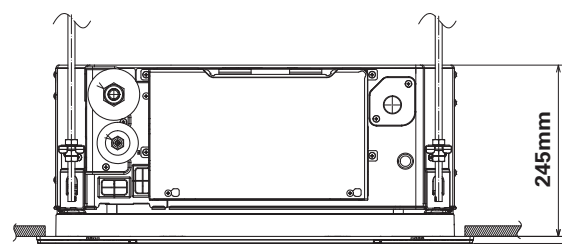
Beautiful Design

The straight-line form introduced has resulted in a beautiful square design. Its high affinity ensures the ability to blend in seamlessly with any interior. The indoor unit is an ideal match for office or store use. Of course, design matched 2x2 (600mm*600mm) ceiling construction specifications.



The Height Above Ceiling of 245mm

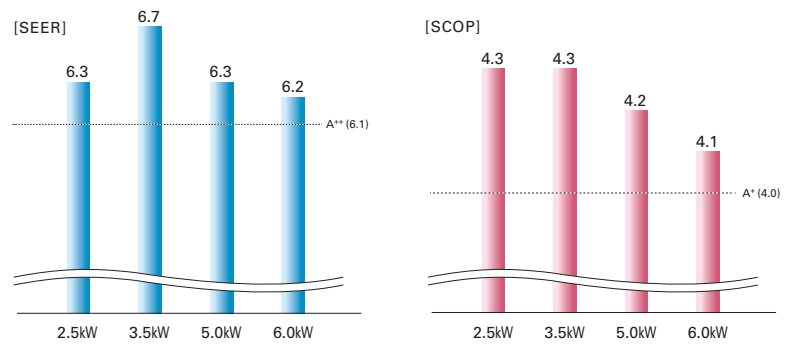
The height above ceiling of 245mm enables fitting into narrow ceiling space. Installation is simple, even when the ceiling spaces are narrow to make the ceilings higher. Of course, in addition to our products, replacing competitors' product is simplified too.



Energy-saving Performance*

The energy-saving performance achieved A++ in SEER and A+ in SCOP.

*In case of connecting with SUZ-M-VA2



Quietness

Low sound level has been realized by introduction of 3D turbo fan. New SLZ can give users quieter and more comfortable room condition.



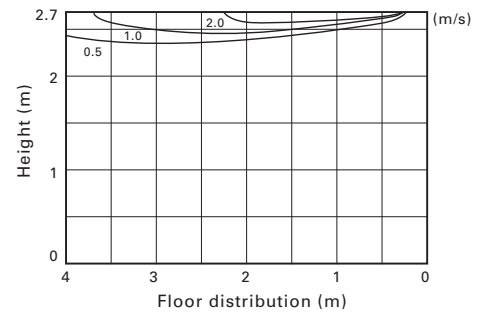
Horizontal Airflow

The new airflow control completely eliminates that uncomfortable drafty-feeling with the introduction of a horizontal airflow that spreads across the ceiling. The ideal airflow for offices and restaurants.

[Airflow distribution]*

SLZ-M60FA

Flow angle, cooling at 20°C (ceiling height 2.7m)



*Vane angle: Horizontal

Easy Installation

Temporary hanging hook

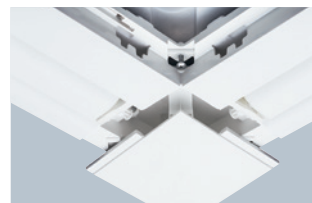
The structure of the panel has been revised and is now equipped with a temporary hanging hook. This has improved work efficiency during temporary panel installation.



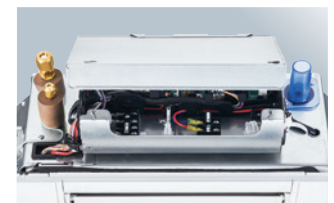
No need to remove screws

Installation is possible without removing the screws for control box simply loosen them. This eliminates the risk of losing screws.

■ Corner panel

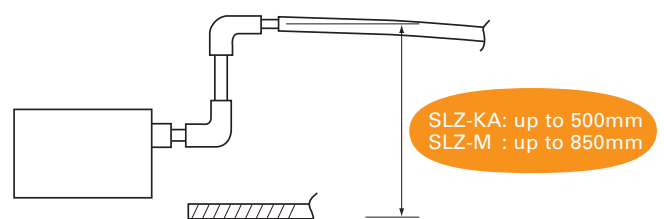


■ Control box cover



Drain Lift

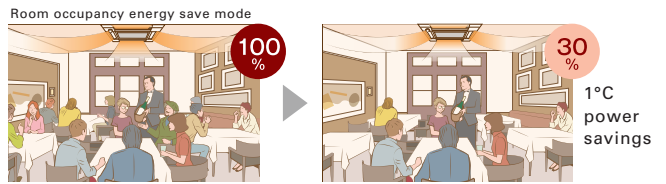
As the result of using a larger drain pan, the maximum drain lifting height has been up to 850mm, greatly enhancing construction flexibility compared to the existing model.



Detects Number of People

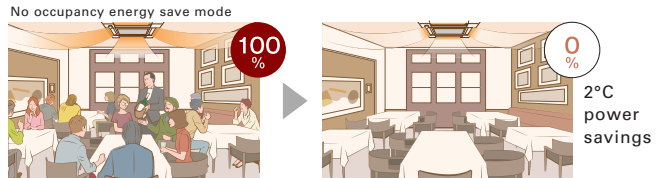
Room occupancy energy-saving mode

The 3D i-see Sensor detects the number of people in the room. It then calculates the occupancy rate based on the maximum number of people in the room up to that point in time in order to save air-conditioning power. When the occupancy rate is approximately 30%, air-conditioning power equivalent to 1°C during both cooling and heating operation is saved. The temperature is controlled according to the number of people.



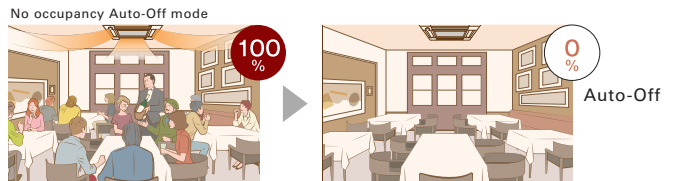
No occupancy energy-saving mode

When 3D i-see Sensor detects that no one is in the room, the system is switched to a pre-set power-saving mode. If the room remains unoccupied for more than 60min, air-conditioning power equivalent to 2°C during both cooling and heating operation is saved. This contributes to preventing waste in terms of heating and cooling.



No occupancy Auto-OFF mode*

When the room remains unoccupied for a pre-set period of time, the air conditioner turns off automatically, thereby providing even greater power savings. The time until operation is stopped can be set in intervals of 10min, ranging from 60 to 180 min.



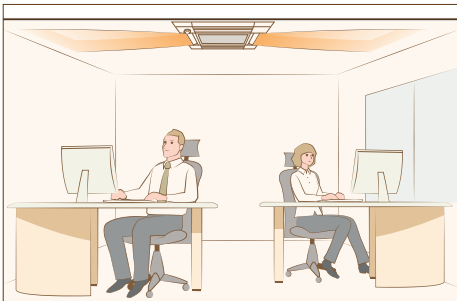
* When MA Remote Controller is used to control multiple refrigerant systems, "No occupancy Auto-OFF mode" cannot be used.

*PAR-41MAA is required for each setting

Detects People's Position

Direct/Indirect settings*

Some people do not like the feel of wind, some want to be warm from head to toe. People's likes and dislikes vary. With the 3D i-see Sensor, it is possible to choose to block or not block to the wind for each vane.



*PAR-41MAA or PAR-SL101A-E is required for each setting.

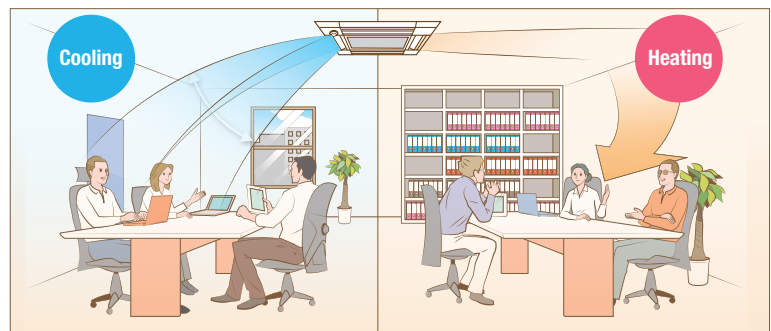
Seasonal airflow*

<When cooling>

Saves energy while keeping a comfortable effective temperature by automatically switching between ventilation and cooling. When a pre-set temperature is reached, the air conditioning unit switches to swing fan operation to maintain the effective temperature. This clever function contributes to keeping a comfortable coolness.

<When heating>

The air conditioning unit automatically switches between circulator and heating. Wasted heat that accumulates near the ceiling is reused via circulation. When a pre-set temperature is reached the air conditioner switches from heating to circulator and blows air in the horizontal direction. It pushes down the warm air that has gathered near the ceiling to people's height, thereby providing smart heating.



*PAR-41MAA is required for each setting.

Connectable to Plasma Quad Connect

The optional Plasma Quad Connect SLP-2FAP, SLP-2FALP, SLP-2FALMP2 can be installed on the indoor units.*1*2*3

*1 Plasma Quad Connect cannot be used with PAC-SK54/46KF-E (V blocking filter).

*2 If Plasma Quad Connect is used with MAC-334/397/5871F-E (Interface), Plasma Quad Connect use the indoor units CN105. Other interface use the another CN105 on Plasma Quad Connect's PCB.

*3 If Plasma Quad Connect is used with PAC-SK35VK-E (Valve kit) or PAC-SK39AP-E (Valve kit attachment), Plasma Quad Connect use the indoor units barring holes for valve kit. Valve kit needs to be installed on suspension bolts or on horizontal surface using dedicated attachment optional parts.



SLZ-M SERIES



Indoor Unit

R32
R410A



SLZ-M15/25/35/50/60FA3

Panel

Panel	With Signal Receiver	With 3D i-see Sensor	With Wireless Remote Controller	With Plasma Quad Connect
SLP-2FA				
SLP-2FAL	✓			
SLP-2FAE		✓		
SLP-2FALE	✓	✓		
SLP-2FALM3	✓		✓	
SLP-2FALME3	✓	✓	✓	
SLP-2FAP				✓
SLP-2FALP	✓			✓
SLP-2FALMP3	✓		✓	✓

Outdoor Unit

R32 For Single

R32 For Multi (Twin/Triple/Quadruple)



Remote Controller



Indoor Unit Combination	Outdoor Unit Capacity														
	For Single							For Twin			For Triple		For Quadruple		
	35	50	60	71	100	125	140	71	100	125	100	125	140	125	140
Power Inverter (PUZ-ZM)	35x1	50x1	60x1	-	-	-	-	35x2	50x2	60x2	35x3	50x3	50x3	35x4	35x4
Distribution Pipe	-	-	-	-	-	-	-	MSDD-50TR2-E			MSDF-111R4-E		MSDF-1111R3-E		

Type		SLZ-M35FA3														SLZ-M50FA3			SLZ-M60FA3		
Indoor Unit		SLZ-M35FA3														SLZ-M50FA3			SLZ-M60FA3		
Outdoor Unit		PUZ-ZM35VKA3														PUZ-ZM50VKA3			PUZ-ZM60VHA3		
Refrigerant (*)		R32														R32			R32		
Power Supply		Outdoor power supply														230/Single/50			230/Single/50		
Cooling	Capacity	Rated	kW		3.6							5.0			6.1						
		Min-Max	kW		1.6 - 4.5							2.3 - 5.6			2.7 - 6.5						
	Total Input	Rated	kW		0.800							1.316			1.649						
	EER				4.50							3.80			3.70						
	Design load		kW		3.6							5.0			6.1						
	Annual electricity consumption (*)		kWh/a		193							280			346						
	SEER (*)				6.5							6.2			6.1						
	Energy efficiency class				A++							A++			A++						
	ηsc		%		-							-			-						
	Heating	Capacity	Rated	kW		4.1							5.0			6.4					
Min-Max			kW		1.6 - 5.0							2.5 - 5.5			2.8 - 7.3						
Total Input		Rated	kW		1.106							1.471			2.065						
COP					3.71							3.40			3.10						
Design load			kW		2.4							3.8			4.4						
Declared Capacity		at reference design temperature	kW		2.4 (-10°C)							3.8 (-10°C)			4.4 (-10°C)						
		at bivalent temperature	kW		2.4 (-10°C)							3.8 (-10°C)			4.4 (-10°C)						
		at operation limit temperature	kW		2.2 (-11°C)							3.7 (-11°C)			2.8 (-20°C)						
Back up heating capacity			kW		0.0							0.0			0.0						
Annual electricity consumption (*)			kWh/a		836							1273			1560						
SCOP (*)				4.0							4.1			3.9							
Energy efficiency class				A+							A+			A							
ηsh		%		-							-			-							
Operating Current (Max)		A		13.3							13.3			19.4							
Indoor Unit	Input [Cooling/Heating]	Rated	kW		0.03 / 0.03							0.03 / 0.03			0.04 / 0.04						
		Operating Current (Max)	A		0.32							0.32			0.43						
	Dimensions	H*W*D		245 - 570 - 570							245 - 570 - 570			245 - 570 - 570							
	Weight	kg		15							15			15							
	Air Volume (Lo-Mi2-Mi1-Hi)	m³/min		6.5 - 8.0 - 9.5 - 11.5							7.0 - 8.5 - 10.0 - 11.5			7.5 - 9.5 - 11.5 - 13.0							
	Sound Level (Lo-Mi2-Mi1-Hi) (SPL)	dB(A)		25 - 30 - 34 - 39							27 - 32 - 36 - 39			32 - 35 - 39 - 43							
	Sound Level (PWL)	dB(A)		57							56			60							
	Outdoor Unit	Dimensions	H*W*D		630 - 809 - 320							630 - 809 - 320			943 - 950 - 355						
			Weight	kg		46							46			67					
		Air Volume	Cooling	m³/min		40							40			55					
Heating			m³/min		40							34			55						
Sound Level (SPL)		Cooling	dB(A)		44							44			47						
		Heating	dB(A)		46							46			49						
Sound Level (PWL)	Cooling	dB(A)		65							65			67							
Operating Current (Max)	A		13.0							13.0			19.0								
Breaker Size	A		16							16			25								
Ext. Piping	Diameter (*)	Liquid/Gas		6.35 / 12.7							6.35 / 12.7			9.52 / 15.88							
	Max.Length	m		50							50			55							
	Max.Height	m		30							30			30							
Guaranteed Operating Range (Outdoor)	Cooling (*)	°C		-15 ~ 46							-15 ~ 46			-15 ~ 46							
	Heating	°C		-11 ~ 21							-11 ~ 21			-20 ~ 21							

*1 Refrigerant leakage contributes to climate change. Refrigerant with lower global warming potential (GWP) would contribute less to global warming than a refrigerant with higher GWP, if leaked to the atmosphere. This appliance contains a refrigerant fluid with a GWP equal to 675. This means that if 1 kg of this refrigerant fluid would be leaked to the atmosphere, the impact on global warming would be 675 times higher than 1 kg of CO₂ over a period of 100 years. Never try to interfere with the refrigerant circuit yourself or disassemble the product yourself and always ask a professional. The GWP of R32 is 675 in the IPCC 4th Assessment Report.

*2 Energy consumption based on standard test results. Actual energy consumption will depend on how the appliance is used and where it is located.

*3 Optional air protection guide is required where ambient temperature is lower than -5°C.

*4 SEER and SCOP are based on 2009/125/EC:Energy-related Products Directive and Regulation(EU) No206/2012.

*5 Joint pipe is required depending on installed refrigerant pipes, outdoor units and indoor units.

SLZ-M SERIES



Indoor Unit

R32
R410A



SLZ-M15/25/35/50/60FA3

Panel

Panel	With Signal Receiver	With 3D i-see Sensor	With Wireless Remote Controller	With Plasma Quad Connect
SLP-2FA				
SLP-2FAL	✓			
SLP-2FAE		✓		
SLP-2FALE	✓	✓		
SLP-2FALM3	✓		✓	
SLP-2FALME3	✓	✓	✓	
SLP-2FAP				✓
SLP-2FALP	✓			✓
SLP-2FALMP3	✓		✓	✓

Outdoor Unit

For Single



SUZ-M25/35VA2

SUZ-M50VA2

SUZ-M60VA2

Remote Controller



Enclosed in SLP-2FALM/SLP-2FALME



Indoor Unit Combination	Outdoor Unit Capacity				
	For Single				
	25	35	50	60	71
S Seires	25x1	35x1	50x1	60x1	-
Distribution Pipe	-	-	-	-	-

Type			SLZ-M25FA3	SLZ-M35FA3	SLZ-M50FA3	SLZ-M60FA3		
Indoor Unit			SLZ-M25FA3	SLZ-M35FA3	SLZ-M50FA3	SLZ-M60FA3		
Outdoor Unit			SUZ-M25VA2	SUZ-M35VA2	SUZ-M50VA2	SUZ-M60VA2		
Refrigerant ⁽¹⁾			R32					
Power Supply	Source	Outdoor power supply						
	Outdoor (V/Phase/Hz)	230/Single/50						
Cooling	Capacity	Rated	kW	2.5	3.5	4.6	5.7	
		Min-Max	kW	1.4 - 3.2	0.7 - 3.9	1.5 - 5.2	1.5 - 6.3	
	Total Input	Rated	kW	0.658	1.000	1.353	1.677	
	EER			3.80	3.50	3.40	3.40	
	Design load		kW	2.5	3.5	4.6	5.7	
	Annual electricity consumption ⁽²⁾		kWh/a	139	183	255	321	
	SEER ⁽²⁾			6.3	6.7	6.3	6.2	
	Energy efficiency class			A++	A++	A++	A++	
	η _{sc}		%	-	-	-	-	
	Heating	Capacity	Rated	kW	3.2	4.0	5.0	6.4
		Min-Max	kW	1.3 - 4.2	1.0 - 5.0	1.3 - 5.5	1.6 - 7.3	
Total Input		Rated	kW	0.887	1.079	1.563	2.134	
COP				3.61	3.71	3.20	3.00	
Design load			kW	2.2	2.7	3.6	4.6	
Declared Capacity		at reference design temperature	kW	2.0 (-10°C)	2.3 (-10°C)	3.2 (-10°C)	4.1 (-10°C)	
		at bivalent temperature	kW	2.0 (-7°C)	2.4 (-7°C)	3.2 (-7°C)	4.1 (-7°C)	
		at operation limit temperature	kW	2.0 (-10°C)	2.3 (-10°C)	3.2 (-10°C)	4.1 (-10°C)	
Back up heating capacity			kW	0.2	0.4	0.4	0.5	
Annual electricity consumption ⁽²⁾			kWh/a	716	875	1192	1569	
SCOP ⁽²⁾			4.3	4.3	4.2	4.1		
Energy efficiency class			A+	A+	A+	A+		
η _{sh}		%	-	-	-	-		
Operating Current (Max)		A	7.0	8.8	13.8	15.2		
Indoor Unit	Input (Cooling/Heating)	Rated	kW	0.02 / 0.02	0.03 / 0.03	0.03 / 0.03	0.04 / 0.04	
	Operating Current (Max)		A	0.2	0.32	0.32	0.43	
	Dimensions	H*W*D	mm	245 - 570 - 570	245 - 570 - 570	245 - 570 - 570	245 - 570 - 570	
	Weight		kg	15	15	15	15	
	Air Volume (Lo-Mi2-Mi1-Hi)		m³/min	6.5 - 7.0 - 7.5 - 8.5	6.5 - 8.0 - 9.5 - 11.5	7.0 - 8.5 - 10.0 - 11.5	7.5 - 9.5 - 11.5 - 13.0	
	Sound Level (Lo-Mi2-Mi1-Hi) (SPL)		dB(A)	25 - 27 - 29 - 31	25 - 30 - 34 - 39	27 - 32 - 36 - 39	32 - 35 - 39 - 43	
	Sound Level (PWL)		dB(A)	48	57	56	60	
	Outdoor Unit	Dimensions	H*W*D	mm	550 - 800 - 285	550 - 800 - 285	714 - 800 - 285	880 - 840 - 330
		Weight		kg	30	35	41	53
		Air Volume	Cooling	m³/min	36.3	34.3	45.8	49.8
Heating			m³/min	34.6	32.7	43.7	55.0	
Sound Level (SPL)		Cooling	dB(A)	45	48	48	49	
		Heating	dB(A)	46	48	49	51	
Sound Level (PWL)		Cooling	dB(A)	59	59	64	65	
Operating Current (Max)			A	6.8	8.5	13.5	14.8	
Breaker Size			A	10	10	20	20	
Ext. Piping		Diameter ⁽⁴⁾	Liquid/Gas	mm	6.35 / 9.52	6.35 / 9.52	6.35 / 12.7	6.35 / 15.88
	Max.Length	Out-In	m	20	20	30	30	
	Max.Height	Out-In	m	12	12	30	30	
Guaranteed Operating Range (Outdoor)	Cooling	°C	-10 ~ 46	-10 ~ 46	-15 ~ 46	-15 ~ 46		
	Heating	°C	-10 ~ 24	-10 ~ 24	-10 ~ 24	-10 ~ 24		

*1 Refrigerant leakage contributes to climate change. Refrigerant with lower global warming potential (GWP) would contribute less to global warming than a refrigerant with higher GWP, if leaked to the atmosphere. This appliance contains a refrigerant fluid with a GWP equal to 675. This means that if 1 kg of this refrigerant fluid would be leaked to the atmosphere, the impact on global warming would be 675 times higher than 1 kg of CO₂ over a period of 100 years. Never try to interfere with the refrigerant circuit yourself or disassemble the product yourself and always ask a professional. The GWP of R32 is 675 in the IPCC 4th Assessment Report.
*2 Energy consumption based on standard test results. Actual energy consumption will depend on how the appliance is used and where it is located.
*3 SEER and SCOP are based on 2009/125/EC:Energy-related Products Directive and Regulation(EU) No206/2012.
*4 Joint pipe is required depending on installed refrigerant pipes, outdoor units and indoor units.

SEZ SERIES

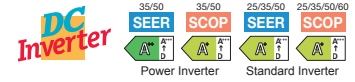


SEZ-M25-71DA3



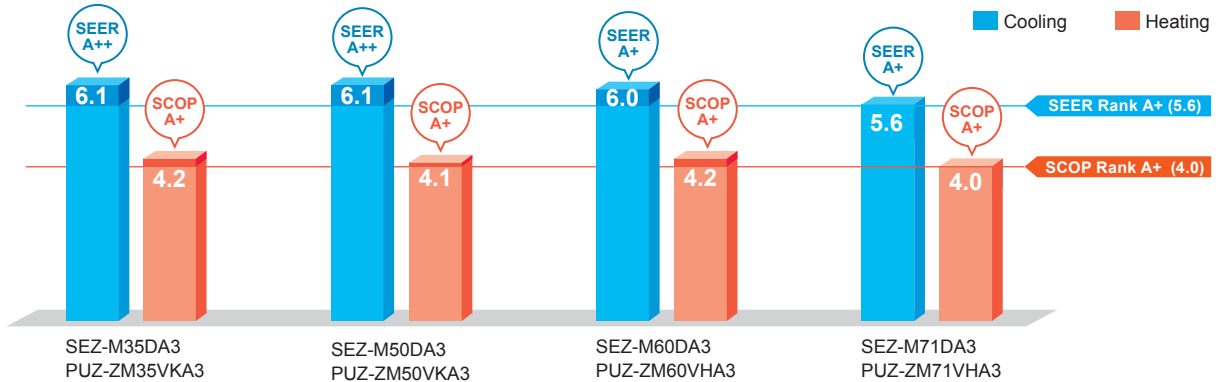
This concealed ceiling-mounted indoor unit series is compact, and fits easily into rooms with lowered ceilings. Highly reliable energy-saving performance makes it a best match choice for concealed unit installations.

High Energy Efficiency

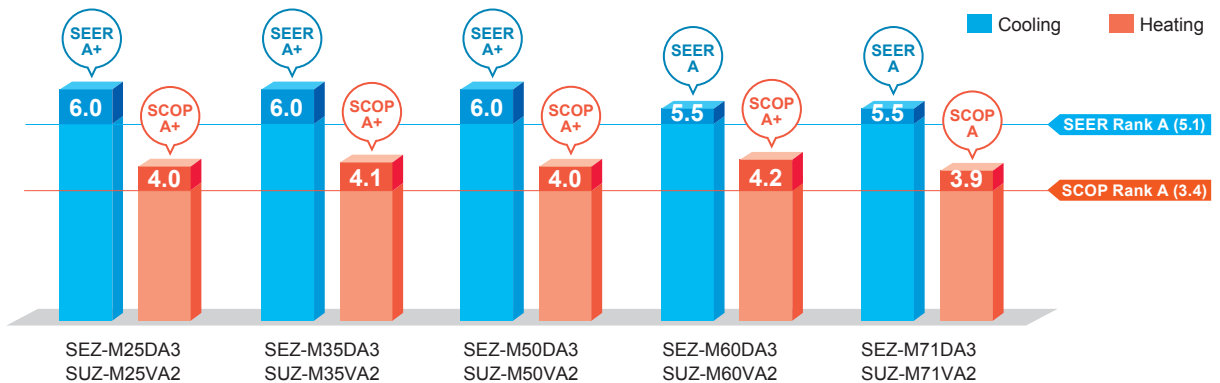


Highly efficient indoor units with DC inverter contribute to a reduction in electricity consumption throughout a year. The SEZ series has achieved energy-saving performance of "A+" or higher when connected to PUZ series and "A" or higher when connected to SUZ-M series.

Power Inverter

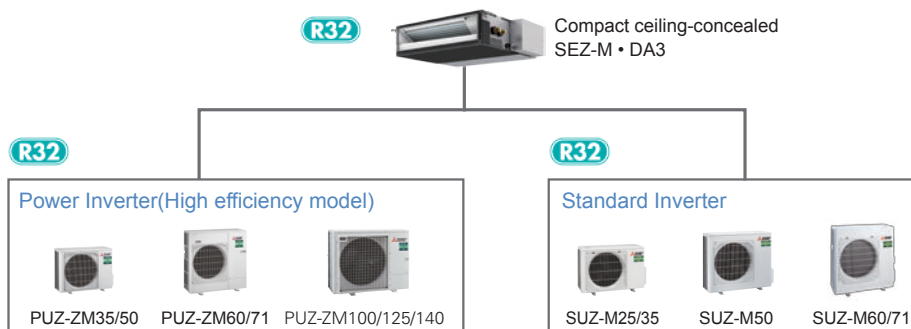


Standard Inverter



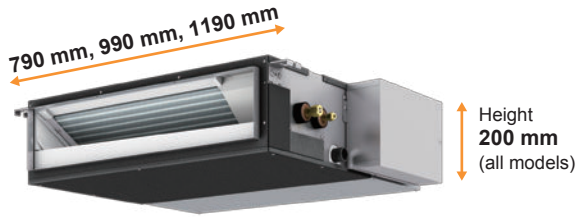
Lineup of Compatible Outdoor Unit has been Expanded by Power Inverter Series

Although models in the SEZ series were previously only compatible with the standard inverter, they can now also be connected to small capacity power inverters. The ability to connect to a power inverter with high-performance specifications makes it possible to offer an even wider range of solutions to our customers.



Compact Design with a Height of 200 mm

The height of the units is 200 mm for all capacity ranges. Its thin body is suitable for installation in low ceilings with a small cavity space.



SEZ-M DA3		M25	M35	M50	M60	M71
Height	mm	200				
Width	mm	790	990	1190		

Low Noise Operation

Low noise operation contributes to a peaceful indoor environment. The SPL of M25/35 model, which is the quietest model among the new series, is as low as 22 dB (ESP 5 Pa, low fan speed setting).

Sound pressure level	Capacity		M25	M35	M50	M60	M71
	Fan speed	High	29	30	36	37	39
		Mid	25	26	33	33	34
	Low	22	22	29	29	29	

*When fan speed setting is low, the cooling/heating capacity is subject to reduce.

*Operation noise may increase due to the installation environment or the operation status.

Selectable Static Pressure Levels

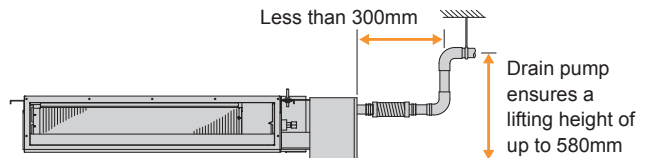
External static pressure can be selected from 5, 25, 35, and 50 Pa (set to 25 Pa at the time of factory shipment).

Four levels Available for All Models

Drain Pump (Optional)

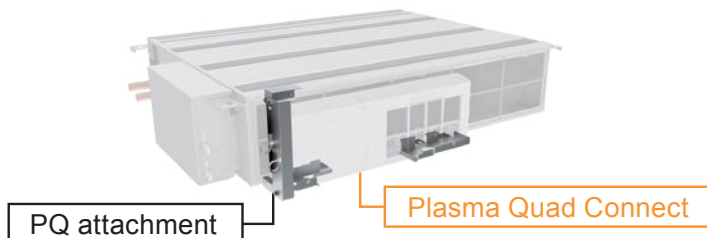
The PAC-KE07DM-E drain pump is available as an option. The drain connection can be raised as high as 580 mm, allowing more freedom in piping layout design.

*The use of drain pump may increase the operation noise.



Connectable to Plasma Quad Connect

The optional Plasma Quad Connect MAC-100FT-E can be installed on the indoor unit's air inlet side. For installation, PQ attachment PAC-HA11PAR is required.

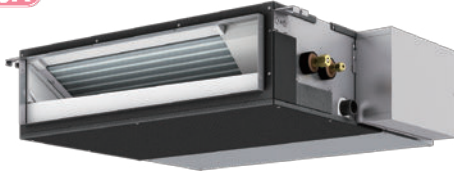


SEZ-M SERIES



Indoor Unit

R32
R410A



SEZ-M25/35/50/60/71DA3 (Requires Wired Remote Controller)

Outdoor Unit

R32 For Single

R32 For Multi (Twin/Triple/Quadruple)



PUZ-ZM35/50 PUZ-ZM60/71 PUZ-ZM71 PUZ-ZM100/125/140

Remote Controller



*optional (for SEZ-M DA3) *optional (for SEZ-M DA3) *optional (for SEZ-M DA3) *optional (for SEZ-M DA3)



Indoor Unit Combination	Outdoor Unit Capacity														
	For Single							For Twin			For Triple			For Quadruple	
	35	50	60	71	100	125	140	71	100	125	100	125	140	125	140
Power Inverter (PUZ-ZM)	35x1	50x1	60x1	71x1	-	-	-	35x2	50x2	60x2	35x3	50x3	50x3	35x4	35x4
Distribution Pipe	-	-	-	-	-	-	-	MSDD-50TR2-E			MSDT-111R4-E			MSDF-1111R3-E	

Type			SEZ-M35DA3	SEZ-M50DA3	SEZ-M60DA3	SEZ-M71DA3	
Indoor Unit			SEZ-M35DA3	SEZ-M50DA3	SEZ-M60DA3	SEZ-M71DA3	
Outdoor Unit			PUZ-ZM35VKA3	PUZ-ZM50VKA3	PUZ-ZM60VHA3	PUZ-ZM71VHA3	
Refrigerant (*)			R32				
Power Supply	Source	Outdoor power supply					
	Outdoor (V/Phase/Hz)	230/Single/50					
Cooling	Capacity	Rated	kW	3.6	5.0	6.1	7.1
		Min-Max	kW	1.6 - 3.9	2.3 - 5.6	2.7 - 6.3	3.3 - 8.1
	Total Input	Rated	kW	0.858	1.316	1.525	1.919
	EER (*)			4.20	3.80	4.00	3.70
	Design load		kW	3.6	5.0	6.1	7.1
	Annual electricity consumption (*)		kWh/a	205	287	352	440
	SEER (*)			6.1	6.1	6.0	5.6
	Energy efficiency class			A++	A++	A+	A+
	ηsc		%	-	-	-	-
	Heating	Capacity	Rated	kW	4.1	6.0	7.0
Min-Max			kW	1.6 - 5.0	2.5 - 7.2	2.8 - 8.0	3.5 - 10.2
Total Input		Rated	kW	1.025	1.579	1.708	2.052
COP (*)				4.00	3.80	4.10	3.90
Design load			kW	2.4	3.8	4.4	4.7
Declared Capacity		at reference design temperature	kW	2.4 (-10°C)	3.8 (-10°C)	4.4 (-10°C)	4.7 (-10°C)
		at bivalent temperature	kW	2.4 (-10°C)	3.8 (-10°C)	4.4 (-10°C)	4.7 (-10°C)
		at operation limit temperature	kW	2.2 (-11°C)	3.7 (-11°C)	2.8 (-20°C)	3.5 (-20°C)
Back up heating capacity			kW	0.0	0.0	0.0	0.0
Annual electricity consumption (*)			kWh/a	795	1279	1464	1633
SCOP (*)			4.2	4.1	4.2	4.0	
Energy efficiency class			A+	A+	A+	A+	
ηsh		%	-	-	-	-	
Operating Current (Max)			A	13.7	13.8	19.9	20.0
	Input [Cooling/Heating]	Rated	kW	0.047	0.077	0.084	0.102
	Operating Current (Max)		A	0.65	0.82	0.88	1.00
	Dimensions	H*W*D	mm	200 - 990 - 700	200 - 990 - 700	200 - 1190 - 700	200 - 1190 - 700
	Weight		kg	22	22	25.5	25.5
	Air Volume (Lo-Mid-Hi)		m³/min	70 - 9.0 - 11.0	10.0 - 12.5 - 15.0	12.0 - 15.0 - 18.0	12.0 - 16.0 - 20.0
	External Static Pressure (*)		Pa	<5> - 25 - <35> - <50>	<5> - 25 - <35> - <50>	<5> - 25 - <35> - <50>	<5> - 25 - <35> - <50>
	Sound Level (Lo-Mid-Hi) (SPL)		dB(A)	23 - 27 - 31	30 - 34 - 37	30 - 34 - 38	30 - 35 - 40
	Sound Level (PWL)		dB(A)	53	60	60	62
	Outdoor Unit	Dimensions	H*W*D	mm	630 - 809 - 320	630 - 809 - 320	943 - 950 - 355
Weight			kg	46	46	67	67
Air Volume		Cooling	m³/min	40	40	55	55
		Heating	m³/min	40	34	55	55
Sound Level (SPL)		Cooling	dB(A)	44	44	47	47
		Heating	dB(A)	46	46	49	49
Sound Level (PWL)		Cooling	dB(A)	65	65	67	67
Operating Current (Max)			A	13.0	13.0	19.0	19.0
Breaker Size			A	16	16	25	25
Ext. Piping		Diameter (*)	Liquid/Gas	mm	6.35 / 12.7	6.35 / 12.7	9.52 / 15.88
	Max.Length	Out-In	m	50	50	55	55
	Max.Height	Out-In	m	30	30	30	30
Guaranteed Operating Range (Outdoor)	Cooling (*)	°C	-15 ~ 46	-15 ~ 46	-15 ~ 46	-15 ~ 46	
	Heating	°C	-11 ~ 21	-11 ~ 21	-20 ~ 21	-20 ~ 21	

*1 Refrigerant leakage contributes to climate change. Refrigerant with lower global warming potential (GWP) would contribute less to global warming than a refrigerant with higher GWP, if leaked to the atmosphere. This appliance contains a refrigerant fluid with a GWP equal to 675. This means that if 1 kg of this refrigerant fluid would be leaked to the atmosphere, the impact on global warming would be 675 times higher than 1 kg of CO₂ over a period of 100 years. Never try to interfere with the refrigerant circuit yourself or disassemble the product yourself and always ask a professional. The GWP of R32 is 675 in the IPCC 4th Assessment Report.

*2 Energy consumption based on standard test results. Actual energy consumption will depend on how the appliance is used and where it is located.

*3 Optional air protection guide is required where ambient temperature is lower than -5°C.

*4 EER/COP and SEER/SCOP for M35-M60 are measured at ESP 25Pa. EER/COP and SEER/SCOP for M71 are measured at ESP 37Pa.

*5 SEER and SCOP are based on 2009/125/EC Energy-related Products Directive and Regulation(EU) No206/2012.

*6 Joint pipe is required depending on installed refrigerant pipes, outdoor units and indoor units.

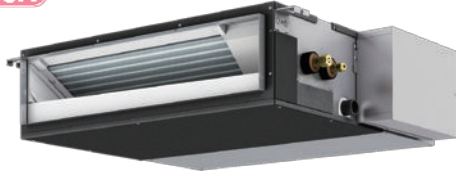
*7 The factory setting of ESP is shown without < > .

SEZ-M SERIES



Indoor Unit

R32
R410A



SEZ-M25/35/50/60/71DA3 (Requires Wired Remote Controller)

Outdoor Unit

For Single

R32



SUZ-M25/35VA2

R32



SUZ-M50VA2

R32



SUZ-M60/71VA2

Remote Controller



*optional
(for SEZ-M DA3)



*optional
(for SEZ-M DA3)



*optional
(for SEZ-M DA3)



*optional
(for SEZ-M DA3)



Indoor Unit Combination	Outdoor Unit Capacity				
	For Single				
	25	35	50	60	71
S Seires	25x1	35x1	50x1	60x1	71x1
Distribution Pipe	-	-	-	-	-

Type		SEZ-M25DA3	SEZ-M35DA3	SEZ-M50DA3	SEZ-M60DA3	SEZ-M71DA3			
Indoor Unit		SEZ-M25DA3	SEZ-M35DA3	SEZ-M50DA3	SEZ-M60DA3	SEZ-M71DA3			
Outdoor Unit		SUZ-M25VA2	SUZ-M35VA2	SUZ-M50VA2	SUZ-M60VA2	SUZ-M71VA2			
Refrigerant (*)		R32							
Power Supply	Source	Outdoor power supply							
	Outdoor (V/Phase/Hz)	230/Single/50							
Cooling	Capacity	Rated	kW	2.5	3.5	5.0	6.1	7.1	
		Min-Max	kW	1.4 - 3.2	0.7 - 3.9	1.1 - 5.6	1.6 - 6.3	2.2 - 8.1	
	Total Input	Rated	kW	0.715	1.000	1.548	1.849	2.152	
	EER (**)			3.50	3.50	3.23	3.30	3.30	
	Design load		kW	2.5	3.5	5.0	6.1	7.1	
	Annual electricity consumption (**)		kWh/a	146	202	290	385	451	
	SEER (***)			6.0	6.0	6.0	5.5	5.5	
	Energy efficiency class				A+	A+	A	A	
	ηsc		%	-	-	-	-	-	
	Heating	Capacity	Rated	kW	2.9	4.2	6.0	7.4	8.0
Min-Max			kW	1.3 - 4.2	1.1 - 5.0	1.5 - 7.2	1.6 - 8.0	2.0 - 10.2	
Total Input		Rated	kW	0.804	1.077	1.618	2.050	2.286	
COP (**)				3.61	3.90	3.71	3.61	3.50	
Design load			kW	2.2	2.6	4.3	4.6	5.8	
Declared Capacity		at reference design temperature	kW	2.0 (-10°C)	2.3 (-10°C)	3.8 (-10°C)	4.1 (-10°C)	5.2 (-10°C)	
		at bivalent temperature	kW	2.0 (-7°C)	2.3 (-7°C)	3.8 (-7°C)	4.1 (-7°C)	5.2 (-7°C)	
		at operation limit temperature	kW	2.0 (-10°C)	2.3 (-10°C)	3.8 (-10°C)	4.1 (-10°C)	5.2 (-10°C)	
Back up heating capacity			kW	0.2	0.3	0.5	0.5	0.6	
Annual electricity consumption (**)			kWh/a	769	878	1501	1516	2030	
SCOP (***)			4.0	4.1	4.0	4.2	3.9		
Energy efficiency class				A+	A+	A+	A		
ηsh		%	-	-	-	-	-		
Operating Current (Max)			A	7.4	9.2	14.3	15.7	15.8	
Indoor Unit	Input [Cooling/Heating]	Rated	kW	0.043	0.047	0.077	0.084	0.102	
	Operating Current (Max)		A	0.62	0.65	0.82	0.88	1.00	
	Dimensions	H*W*D	mm	200 - 790 - 700	200 - 990 - 700	200 - 990 - 700	200 - 1190 - 700	200 - 1190 - 700	
	Weight		kg	18	22	22	25.5	25.5	
	Air Volume (Lo-Mid-Hi)		m³/min	5.5 - 7.0 - 9.0	7.0 - 9.0 - 11.0	10.0 - 12.5 - 15.0	12.0 - 15.0 - 18.0	12.0 - 16.0 - 20.0	
	External Static Pressure (*)		Pa	<5> - 25 - <35> - <50>	<5> - 25 - <35> - <50>	<5> - 25 - <35> - <50>	<5> - 25 - <35> - <50>	<5> - 25 - <35> - <50>	
	Sound Level (Lo-Mid-Hi) (SPL)		dB(A)	23 - 26 - 30	23-27-31	30 - 34 - 37	30 - 34 - 38	30 - 35 - 40	
	Sound Level (PWL)		dB(A)	54	53	60	60	62	
	Outdoor Unit	Dimensions	H*W*D	mm	550 - 800 - 285	550 - 800 - 285	714 - 800 - 285	880 - 840 - 330	880 - 840 - 330
		Weight		kg	30	35	41	53	54
Air Volume		Cooling	m³/min	36.3	34.3	45.8	49.8	49.8	
		Heating	m³/min	34.6	32.7	43.7	55.0	55.0	
Sound Level (SPL)		Cooling	dB(A)	45	48	48	49	49	
		Heating	dB(A)	46	48	49	51	51	
Sound Level (PWL)		Cooling	dB(A)	59	59	64	65	66	
		Heating	dB(A)	6.8	8.5	13.5	14.8	14.8	
Operating Current (Max)			A	10	10	20	20	20	
Ext. Piping		Diameter (*)	Liquid/Gas	mm	6.35 / 9.52	6.35 / 9.52	6.35 / 12.7	6.35 / 15.88	9.52 / 15.88
	Max.Length	Out-In	m	20	20	30	30	30	
		Out-In	m	12	12	30	30	30	
	Max.Height		m	12	12	30	30	30	
Guaranteed Operating Range (Outdoor)	Cooling	°C	-10 ~ 46	-10 ~ 46	-15 ~ 46	-15 ~ 46	-15 ~ 46		
	Heating	°C	-10 ~ 24	-10 ~ 24	-10 ~ 24	-10 ~ 24	-10 ~ 24		

*1 Refrigerant leakage contributes to climate change. Refrigerant with lower global warming potential (GWP) would contribute less to global warming than a refrigerant with higher GWP, if leaked to the atmosphere. This appliance contains a refrigerant fluid with a GWP equal to 675. This means that if 1 kg of this refrigerant fluid would be leaked to the atmosphere, the impact on global warming would be 675 times higher than 1 kg of CO₂ over a period of 100 years. Never try to interfere with the refrigerant circuit yourself or disassemble the product yourself and always ask a professional. The GWP of R32 is 675 in the IPCC 4th Assessment Report.

*2 Energy consumption based on standard test results. Actual energy consumption will depend on how the appliance is used and where it is located.

*3 EER/COP and SEER/SCOP for M25-M60 are measured at ESP 25Pa. EER/COP and SEER/SCOP for M71 are measured at ESP 37Pa.

*4 SEER and SCOP are based on 2009/125/EC:Energy-related Products Directive and Regulation(EU) No206/2012.

*5 Joint pipe is required depending on installed refrigerant pipes, outdoor units and indoor units.

*6 The factory setting of ESP is shown without < > .

SFZ SERIES

The concealed floor standing type indoor unit is newly introduced to the S-series and can be neatly installed in the perimeter zone. High energy efficiency is achieved across all capacity range. External static pressure, airflow rate, and air intake direction can be selected according to the customer's choice.

R32

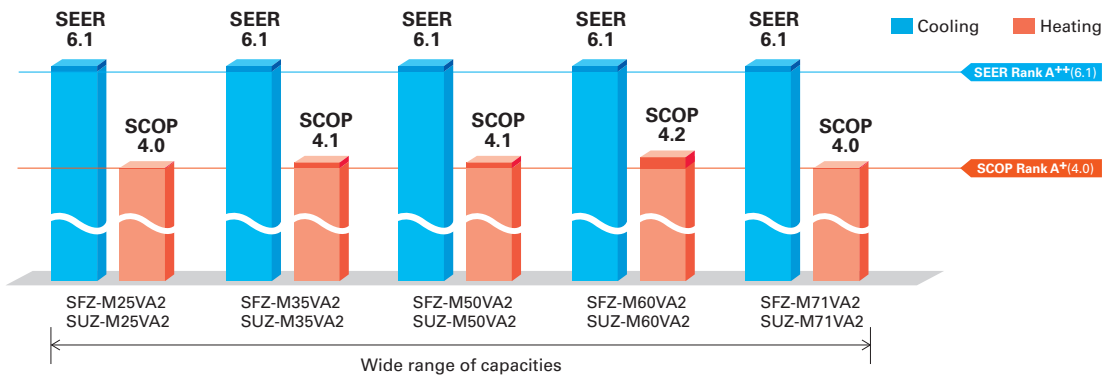


SFZ-M25/35/50/60/71VA2



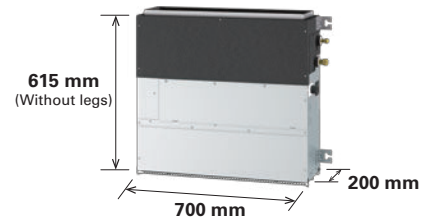
A Wide Lineup Offering High Energy Efficiency

The SFZ series achieves an A++ rating on the SEER index, and an A+ rating on the SCOP index for all capacity range. No matter which capacity you select, the series offers a high level of energy efficiency.



Compact Body and Small Footprint

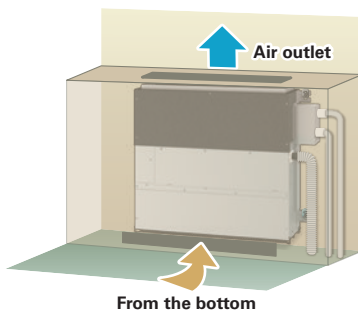
With the control box built inside the unit, the compact body and small footprint are realized. This allows the unit to be installed within a small perimeter zone.



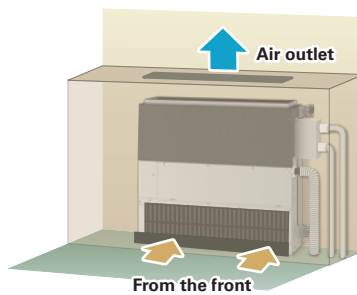
Flexible Installation

Air inlet direction from the bottom or front can be selected by changing panel, fan guard and filter.

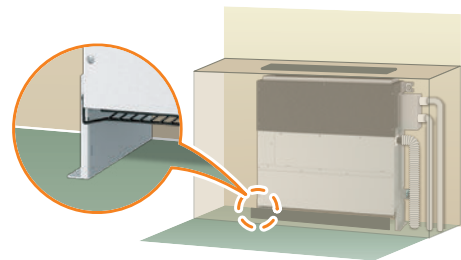
Bottom suction *1



Front suction *2



Installation with legs



*Height of unit (with legs) is 690 mm.
*Legs are supplied as accessory with the unit.

*1 Select a site where the flow of supply air is not blocked. The unit cannot be placed directly on the floor in the case of bottom suction.

*2 Unit with front suction generate more noise compared to bottom suction. Not recommended to be installed in rooms such as bedrooms where quietness is valued.

Fan Speed

Airflow rate can be selected from 3 patterns; Low-Medium-High.

External Static Pressure

Four levels of static pressure are available. The ability to select additional static pressure provides flexibility for air outlet configuration.

SFZ-M25/35/50/60/71VA2 <0>/25/<40>/<60> Pa

The factory setting of external static pressure is shown without brackets (<>).

Refer to "Fan characteristics curves" according to the external static pressure, in the DATA BOOK for the usable range of airflow rate.

SFZ-M SERIES

Indoor Unit

R32



SFZ-M25/35/50/60/71VA2

Outdoor Unit

R32

R32

R32



SUZ-M25/35VA2



SUZ-M50VA2



SUZ-M60/71VA2

Remote Controller



PAR-40MAA
*Optional



PAR-CT01MAA
*Optional



PAC-YT52CRA
*Optional

Type				SFZ-M25VA2	SFZ-M35VA2	SFZ-M50VA2	SFZ-M60VA2	SFZ-M71VA2	
Indoor Unit				SFZ-M25VA2	SFZ-M35VA2	SFZ-M50VA2	SFZ-M60VA2	SFZ-M71VA2	
Outdoor Unit				SUZ-M25VA2	SUZ-M35VA2	SUZ-M50VA2	SUZ-M60VA2	SUZ-M71VA2	
Refrigerant ⁽⁷⁾				R32					
Power Supply	Source	Outdoor power supply							
	Outdoor (V/Phase/Hz)	230/Single/50							
Cooling	Capacity	Rated	kW	2.5	3.5	5.0	6.1	7.1	
		Min-Max	kW	1.5 - 3.2	0.7 - 3.9	1.1 - 5.6	1.6 - 6.3	1.9 - 8.1	
	Total Input	Rated	kW	0.642	1.000	1.471	1.849	2.152	
	EER ⁽³⁾			3.90	3.50	3.40	3.30	3.30	
	Design load		kW	2.5	3.5	5.0	6.1	7.1	
	Annual electricity consumption ⁽²⁾		kWh/a	143	199	284	346	403	
	SEER ^(3,4)			6.1	6.1	6.1	6.1	6.1	
	Energy efficiency class				A++	A++	A++	A++	A++
	η _{sc}		%	-	-	-	-	-	-
	Heating	Capacity	Rated	kW	3.2	4.1	6.0	7.0	8.0
Min-Max			kW	1.2 - 4.2	1.0 - 5.0	1.5 - 7.2	1.6 - 8.0	2.0 - 10.2	
Total Input		Rated	kW	0.887	1.052	1.618	1.887	2.157	
COP ⁽³⁾				3.61	3.90	3.71	3.71	3.71	
Design load			kW	2.2	2.6	4.3	4.6	5.8	
Declared Capacity		at reference design temperature	kW	2.0 (-10°C)	2.3 (-10°C)	3.3 (-10°C)	4.1 (-10°C)	5.2 (-10°C)	
		at bivalent temperature	kW	2.0 (-7°C)	2.3 (-7°C)	3.8 (-7°C)	4.1 (-7°C)	5.2 (-7°C)	
		at operation limit temperature	kW	2.0 (-10°C)	2.3 (-10°C)	3.3 (-10°C)	4.1 (-10°C)	5.2 (-10°C)	
Back up heating capacity			kW	0.2	0.3	1.0	0.5	0.6	
Annual electricity consumption ⁽²⁾			kWh/a	767	888	1468	1533	1998	
SCOP ^(3,4)			4.0	4.1	4.1	4.2	4.0		
Energy efficiency class				A+	A+	A+	A+	A+	
η _{sh}		%	-	-	-	-	-	-	
Operating Current (Max)			A	7.4	9.1	14.3	15.6	15.7	
Indoor Unit	Input	Rated	kW	0.041	0.044	0.072	0.078	0.095	
	Operating Current (Max)		A	0.44	0.44	0.61	0.64	0.76	
	Dimensions <Panel> ^(5,7)	H*W*D	mm	615 (690) - 797 (700) - 200	615 (690) - 997 (900) - 200	615 (690) - 997 (900) - 200	615 (690) - 1197 (1100) - 200	615 (690) - 1197 (1100) - 200	
	Weight		kg	19	22.5	22.5	26	26	
	Air Volume (Lo-Mid-Hi)		m ³ /min	5.5 - 7.0 - 9.0	7.0 - 9.0 - 11.0	10.0 - 12.5 - 15.0	12.0 - 15.0 - 18.0	12.0 - 16.0 - 20.0	
	External Static Pressure ⁽⁸⁾		Pa	<0> - 25 - <40> - <60>	<0> - 25 - <40> - <60>	<0> - 25 - <40> - <60>	<0> - 25 - <40> - <60>	<0> - 25 - <40> - <60>	
	Sound Level (Lo-Mid-Hi) (SPL) ⁽⁹⁾		dB(A)	25 - 29 - 35	25 - 29 - 33	30 - 35 - 39	30 - 35 - 39	30 - 36 - 42	
	Sound Level (PWL)		dB(A)	54	53	59	59	61	
	Outdoor Unit	Dimensions	H*W*D	mm	550 - 800 - 285	550 - 800 - 285	714 - 800 - 285	880 - 840 - 330	880 - 840 - 330
		Weight		kg	30	35	41	53	54
Air Volume		Cooling	m ³ /min	36.3	34.3	45.8	49.8	49.8	
		Heating	m ³ /min	34.6	32.7	43.7	55.0	55.0	
Sound Level (SPL)		Cooling	dB(A)	45	48	48	49	49	
		Heating	dB(A)	46	48	49	51	51	
Sound Level (PWL)		Cooling	dB(A)	59	59	64	65	66	
Operating Current (Max)		A	6.8	8.5	13.5	14.8	14.8		
Breaker Size		A	10	10	20	20	20		
Ext. Piping	Diameter ⁽⁶⁾	Liquid/Gas	mm	6.35 / 9.52	6.35 / 9.52	6.35 / 12.7	6.35 / 15.88	9.52 / 15.88	
	Max.Length	Out-In	m	20	20	30	30	30	
	Max.Height	Out-In	m	12	12	30	30	30	
Guaranteed Operating Range (Outdoor)	Cooling	°C	-10 ~ 46	-10 ~ 46	-15 ~ 46	-15 ~ 46	-15 ~ 46		
	Heating	°C	-10 ~ 24	-10 ~ 24	-10 ~ 24	-10 ~ 24	-10 ~ 24		

*1 Refrigerant leakage contributes to climate change. Refrigerant with lower global warming potential (GWP) would contribute less to global warming than a refrigerant with higher GWP, if leaked to the atmosphere. This appliance contains a refrigerant fluid with a GWP equal to 675. This means that if 1 kg of this refrigerant fluid would be leaked to the atmosphere, the impact on global warming would be 675 times higher than 1 kg of CO₂ over a period of 100 years. Never try to interfere with the refrigerant circuit yourself or disassemble the product yourself and always ask a professional. The GWP of R32 is 675 in the IPCC 4th Assessment Report.

*2 Energy consumption based on standard test results. Actual energy consumption will depend on how the appliance is used and where it is located.

*3 SEER/SCOP are measured at ESP 25Pa.

*4 SEER and SCOP are based on 2009/125/EC:Energy-related Products Directive and Regulation(EU) No206/2012.

*5 Joint pipe is required depending on installed refrigerant pipes, outdoor units and indoor units.

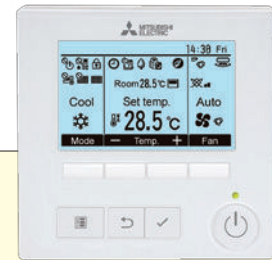
*6 The height that includes the duct flange is 638 (713) mm. The values in () show the height of unit with leg.

*7 The width includes the pipe cover (sheet metal). The values in () show the width that does not include the pipe cover.

*8 The factory setting of ESP is shown without < > .

*9 SPL measured at ESP 25Pa.

CONTROL TECHNOLOGIES



PAR-41MAA

User-friendly Deluxe Remote Controller with Excellent Operability and Visibility

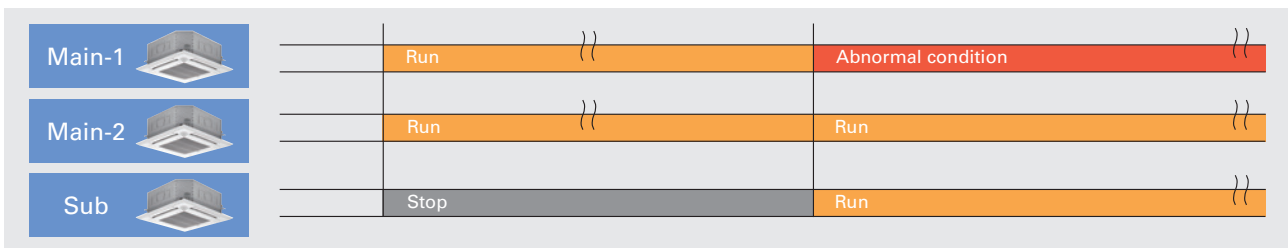
2+1 Back-up Rotation*

The use of a three-refrigerant air conditioning system enables you to utilize the back-up, rotation, and cut-in functions. This allows you to implement effective risk management for added peace of mind.

*Availability of this function is depending on outdoor unit, indoor unit and remote controller.

Back-up Function

In the unlikely event that one of the units stops operation due to an abnormality, the standby unit immediately starts back-up operation. Being fully prepared for a failure guarantees that an operation is always available and gives you the confidence that your system will be reliable in any situation.



Rotation Function

A single remote controller is used to operate three-refrigerant air conditioning system in a rotation pattern. Reducing the burden on the equipment allows you to maintain a longer time between maintenance and increases product life.



Cut-in Function

If the actual room temperature greatly differs from the set temperature and two-refrigerant air conditioning system is insufficient, the standby unit starts operation to provide support.

